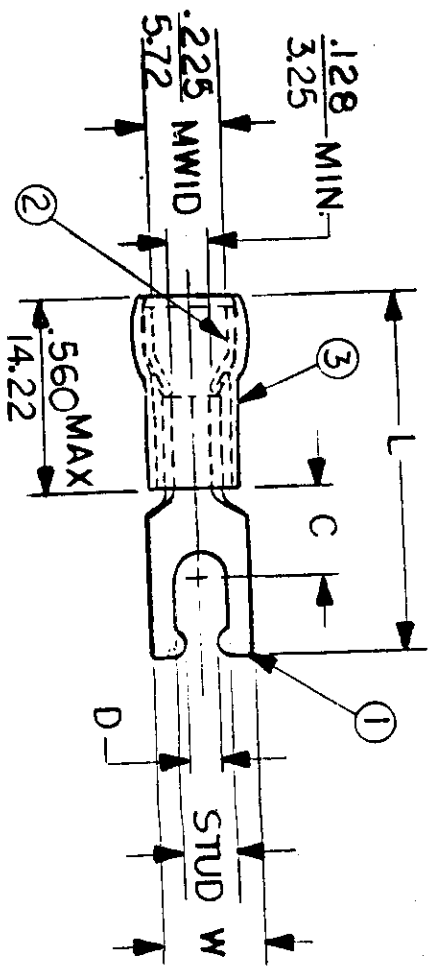


NOTES:

- ① MAT'L: COPPER (STOCK TKN. $\frac{.040}{\pm .001}$)
PLATING: ELECTRO TIN (.0003 MIN)
 - ② TIN-PLATED BRASS FUNNEL FERRULE
 - ③ NYLON INSULATION (COLOR CODED YELLOW)
- STUD SIZES: ($\pm .005$)
- 02 = .094
 - 04 = .119
 - 06 = .146
 - 08 = .173
 - 10 = .198
 - 14 = .265
 - 56 = .328
 - 38 = .390
- "UL" LISTING #E32244
"CSA" LISTING #18689
- WIRE SIZE: 12 - 10 AWG
4.0 - 6.0 MM²

ALL DIMENSIONS = $\frac{\text{INCHES}}{\text{MM}}$

(MWID) = DENOTES MAXIMUM WIRE INSULATION DIAMETER



FILE NO. C-CD-805 -01

PART NUMBER	"W" ±.010	"C" MIN.	"L" MAX.	"D" ±.005	AVAILABLE STUD SIZES
C-8196-	$\frac{.290}{7.37}$	$\frac{.305}{7.75}$	$\frac{1.112}{28.24}$	$\frac{.111}{2.82}$	06
C-8197-	$\frac{.320}{8.13}$	$\frac{.305}{7.75}$	$\frac{1.140}{28.96}$	$\frac{.137}{3.48}$	08
C-8198-	$\frac{.320}{8.13}$	$\frac{.305}{7.75}$	$\frac{1.160}{29.46}$	$\frac{.163}{4.14}$	10
C-8199-	$\frac{.415}{10.54}$	$\frac{.375}{9.53}$	$\frac{1.286}{32.66}$	$\frac{.223}{5.66}$	14

DIMENSIONAL TOLERANCES UNLESS OTHERWISE SPECIFIED		REFERENCE	SCALE:	NTS	DATE	TITLE:
FRAC.	DEC.	ANG.	DRWN. BY:	JJ	11-13-84	SNAP SPADE TONGUE TERMINAL AVIKRIMP 800-SERIES
±	±	±	CHKD. BY:	GZ	11-26-84	
			APPRD. BY:			

DWG. NO.	A	CUSTOMER DWG
----------	---	--------------

ETC INCORPORATED **molex**